



# Installation guide

Microsoft Dynamics C5 2012  
Service pack 2 Hot fix 1

4.4.02.001

July 2014

## Contents

|   |    |
|---|----|
| Installation of Service Pack 2 hot fix 1                              | 3  |
| Contents of Service Pack 2 Hot fix 1                                  | 4  |
| Before starting the installation                                      | 4  |
| Make full back up of the installation!                                | 4  |
| Check if installation is Native or SQL.                               | 4  |
| Installation of Service Pack 2 Hot fix 1                              | 5  |
| Installation of kernels   | 6  |
| Start Microsoft Dynamics C5 2012                                      | 7  |
| Update of data dictionary:  | 8  |
| Import OIOUBL mapping   | 9  |
| OIOUBL presentation style sheets per 15 <sup>th</sup> of march 2013   | 10 |
| OIOUBL schematron style sheets per 15 <sup>th</sup> of september 2014 | 10 |
| DBD automerge   | 10 |

## Installation of Service Pack 2 hot fix 1

This installation guide describes how to update from Microsoft Dynamics C5 2012 Service Pack 2 to Microsoft Dynamics C5 2012 Service Pack 2 hot fix 1.

The Hot fix is released as compressed files without installation program. The update is done by uncompressing the relevant zip file and copying the files to the C5 folders and overwriting existing files.

The Hot fix includes all updates in the s5p (syp-layer) released since the original release of version 2012, but it is a prerequisite that all files included in Version 2012 Service Pack 1 and Service Pack 2 are copied to the C5 program folders prior to installation of this Hot fix.

The release of this Hot fix is shipped as 2 sets of compressed files – one for each database type:

- C5\_2012\_SP2\_HF1\_Native.zip for Native database
- C5\_2012\_SP2\_HF1\_SQL.zip for SQL database

## Contents of Service Pack 2 Hot fix 1

The Hot fix is shipped as 2 sets of compressed files – one for each database type:

- C5\_2012\_SP2\_HF1\_Native.zip for Native database
- C5\_2012\_SP2\_HF1\_SQL.zip for SQL database

For both C5\_2012\_SP2\_HF1\_Native.zip and C5\_2012\_SP2\_HF1\_SQL.zip, following files are present:

| Folder        | File name                                       |
|---------------|---|
| Documentation | Installation_Guide_C5_2012_SP2_HF1.pdf          |
|               | Fix_list_Microsoft_Dynamics_C5_2012_SP2_HF1.pdf |
|               | Kernel_Newsletter_C5_4.4.2.417.pdf              |
| Data          | C5txt.dat.dk, C5txt.dat.uk, C5txt.dat.is        |
|               | c5util.c5p (syp-file)                           |
|               | exp4402001.c5s                                  |

**NativeKernel:** The Native Kernel folder will include:  
C5W32.exe, C5W32C.exe and

**SQLKernel:** The SQL Kernel folder will include:  
D5W32.exe, D5W32C.exe

## Before starting the installation

To ensure an easy and secure installation following steps have to be done

### Make full back up of the installation!

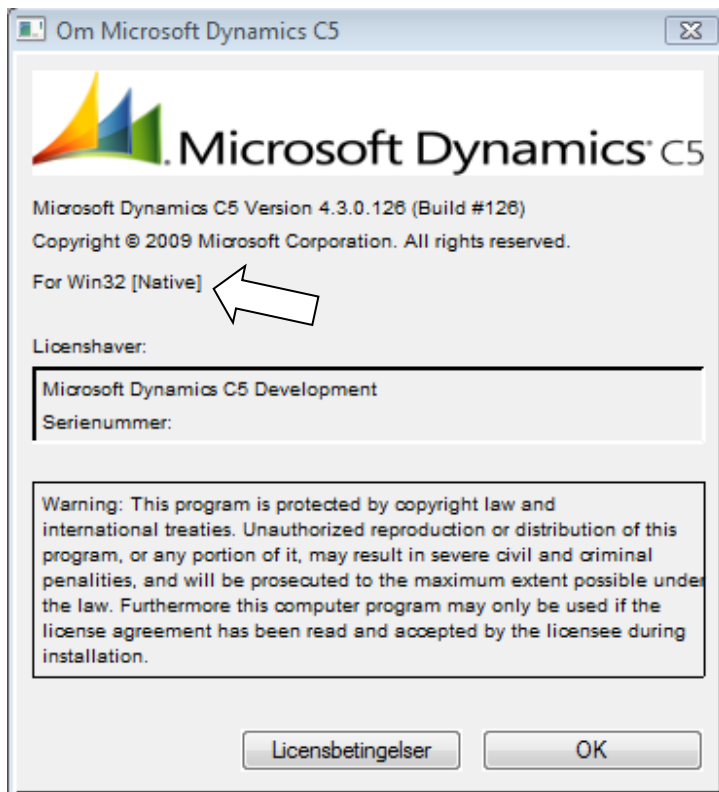
It is important to make a backup of the entire existing Microsoft Dynamics C5 installation before the update is started. The update requires that existing files are overwritten; it will not be possible to restore the original files after the update.

### Check if installation is Native or SQL.

If it is uncertain whether the original installation was Microsoft Dynamics C5 2012 Native or SQL and thereby which zip file that should be unpacked C5\_2012SP2\_HF1\_Native.zip or C5\_2012SP2\_HF1\_SQL.zip to perform the upgrade, this can be checked like follows:

1. Start current Microsoft® Dynamics C5 2012.
2. Click menu bar on top and select "Help\About Microsoft® Dynamics C5" (In console version this can be found by pressing ALT+A)

Just above the field "License holder/Licenshaver" it is written whether the current installation is a Native or SQL installation. In the example below, a Native kernel is used.



If Native kernel is used the following should be used:

C5\_2012SP2\_HF1\_Native.zip

If SQL kernel is used the following should be used:

C5\_2012SP2\_HF1\_SQL.zip

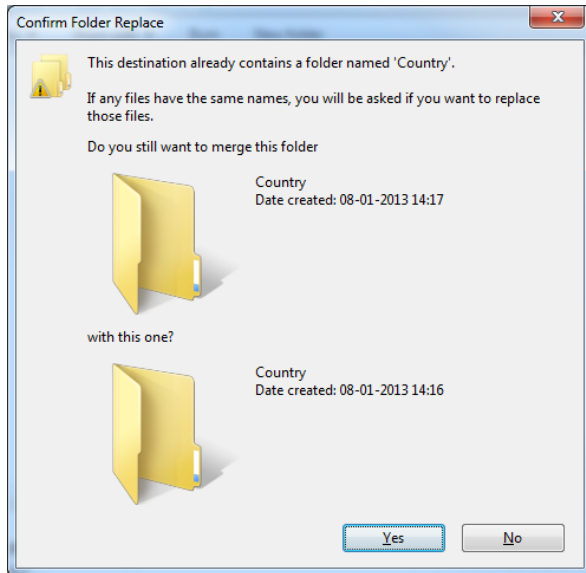
## Installation of Service Pack 2 Hot fix 1

Copy the file C5\_2012SP2\_HF1\_Native.zip/C5\_2012SP2\_HF1\_SQL.zip to a temporary folder and unpack the files. Unpack the files with YES to use folder names.

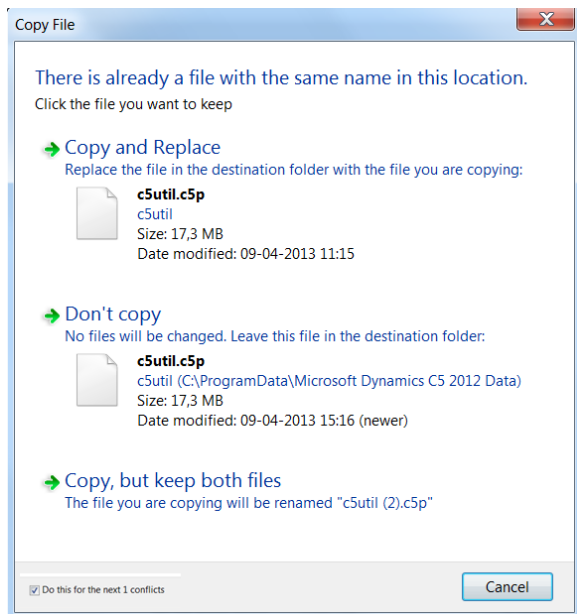
The description below shows where the installation has to be made if the default folder structure was chosen during the installation of Microsoft Dynamics C5. If the installation folder was changed during the installation, you have to find this folder.

The starting point for the description below is an English version of Windows® Windows7™, hence folder structure and naming..

Copy/overwrite the contents of the unzipped folder named "C5NativeData" or "C5SQLData" (depending on what you use) to : C:\ProgramData\Microsoft Dynamics C5 2012 Data



Mark the field "Do this for the next xx conflicts" and press **Copy and Replace**  
 A warning will appear telling you that this destination already contains a folder with the same name.



Mark the field "Do this for all current items" and Click **Yes (Copy and Replace)**

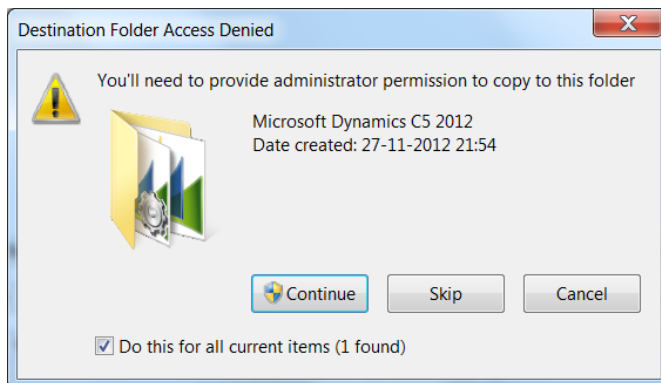
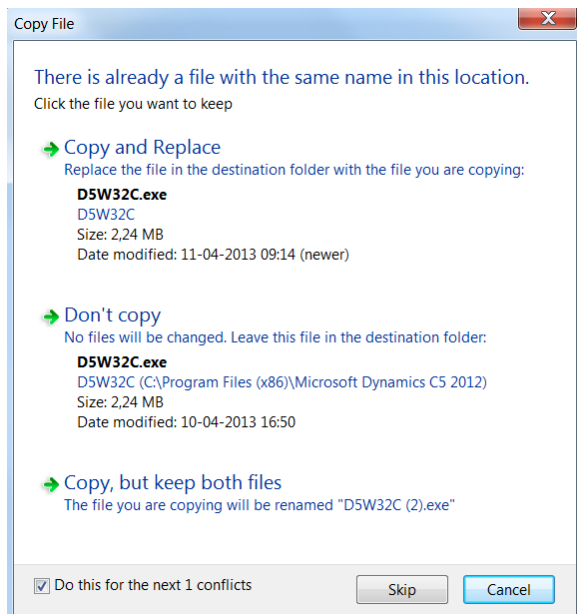
## Installation of kernels

Copy/overwrite the contents of the unzipped folder named "C5NativeKernel" or "C5SQLKernel" (depending on what you use) to : C:\Program files\Microsoft Dynamics C5 2012 (C:\Program files (x86)\Microsoft Dynamics C5 2012)

For **SQL** the files are named D5W32C.EXE and D5W32.EXE  
 For **Native** the files are named C5W32C.EXE and C5W32.EXE

A warning will appear for both the console version and the GUI version telling that you are about to overwrite existing files. Click "Copy and Replace" for both warnings.

Below is the installation of SQL shown.



Click "Continue" and the files will be copied to the folder.

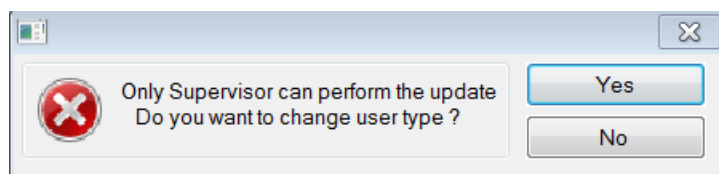
You can now delete the temporary folder where you unzipped the files and you are ready to go to the section "Start Microsoft Dynamics C5 2012".

## Start Microsoft Dynamics C5 2012

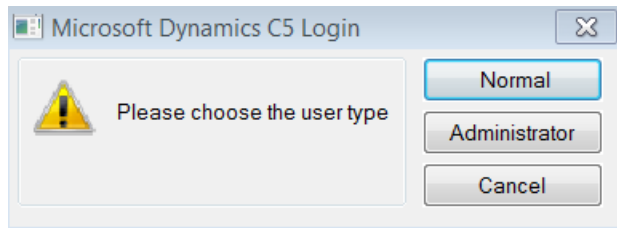
Go to Start\Programs\Microsoft Dynamics C5 and Start Microsoft Dynamics C5

A dialog appears asking for permission to **update to version 4.4.02.001** – enter "Yes"

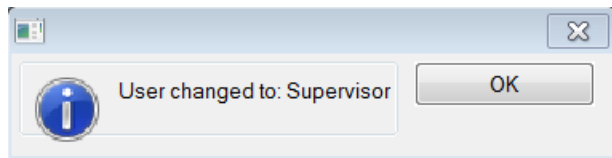
If you have not started as "Supervisor" you will get the opportunity to change:



Click "Yes"



Change to "Administrator"



Click OK

## Update of data dictionary:

There are no changes to the Data Dictionary in this Hot fix but if you are installing this hot fix together with Service Pack 2 a new dialog appears:

**Begin Auto merge to Microsoft Dynamics C5** – it is asking to make changes because there are changes to the data dictionary in Service Pack 2.

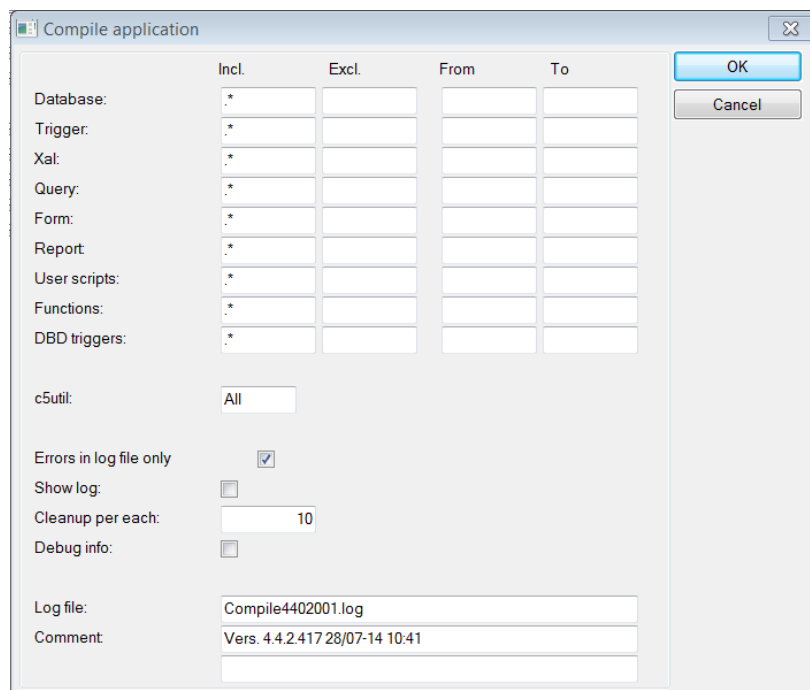
Enter "YES" (Enter)

New dialog is asking:

**Update Data Dictionary automatically to Microsoft Dynamics C5 version 4.4.02.001**

Enter "YES" (Enter)

Afterwards Microsoft Dynamics C5 2012 automatically will recommend a **compilation of the application**.



If the column "Incl." is not filled out, you have to mark it manually as shown in the picture above.  
Press "F3" to start the compilation.

As soon as the compilation has finished you will be asked if you want to update the company to version 4.4.02.001

Just enter "Yes" and you are running Microsoft Dynamics C5 version 4.4.02.001.

If you are using several companies, you will have to update each company separately. By changing the company (General/Daily/Change data set (company)) you will be asked to update the data set to version 4.4.02.001.

**Note** - The update may take a while for larger companies having a lot of orders in the Sales order-, Purchase order or Project archive.

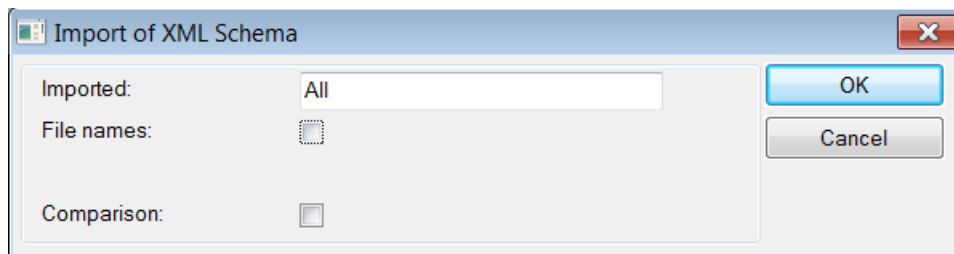
To ensure that the correct Hot fix is installed go to – General, Table, System status, Customization configuration and verify following:

|                      |              |
|----------------------|--------------|
| Application version: | 4.4.02.001   |
| Build                | 4.4.02.001.3 |
| Kernel version:      | 4.4.2.417    |

## Import OIOUBL mapping

The mapping can be imported from: General, Table, XML, XML Schema - Menu item – Import mapping  
You then have to navigate to the file OIOUBL.Mapping.c5m.

The file is default placed in the folder:  
C:\ProgramData\Microsoft Dynamics C5 2012 Data\Country\DK\OIOUBL.Mapping.c5m



Choose "All" or import the schemas one by one.

If there schemas exists in the file that already are imported, a warning will appear asking if you want to overwrite the existing file. If there are not made any modifications to the released mapping – say yes to overwriting to all the schemas.

You can choose whether the Presentation style sheet or Schematron file should be overwritten, but be aware that the mapping delivered is empty for Style sheet and Schematron files.

The mapping has to be imported in each dataset.

**Note:** The mapping included in this hot fix can only be used with this hot fix or later versions

## OIOUBL presentation style sheets per 15<sup>th</sup> of march 2013

If you do not already have downloaded the new presentation style sheets they can be down loaded from:

<http://www.oioubl.info/oioubltools/da/oioubltools.html>

## OIOUBL schematron style sheets per 15<sup>th</sup> of september 2014

If you do not already have downloaded the new schematron style sheets they can be down loaded from:

<http://digitaliser.dk/resource/2514884>

## DBD automerger

OBS - When you update C5 versions where payroll tables are set to "Only in DAT file" the tables are set to "In each datafile" after the DBDautomerger has run.

Microsoft Dynamics is a line of integrated, adaptable business management solutions that enables you and your people to make business decisions with greater confidence. Microsoft Dynamics works like and with familiar Microsoft software, automating and streamlining financial, customer relationship, and supply chain processes in a way that helps you drive business success.

United States and Canada toll free: (888) 477-7989 Worldwide: (1) (701) 281-6500 [www.microsoft.com/dynamics](http://www.microsoft.com/dynamics)

The information contained in this document represents the current view of Microsoft Corporation on the issues discussed as of the date of publication. Because Microsoft must respond to changing market conditions, this document should not be interpreted to be a commitment on the part of Microsoft, and Microsoft cannot guarantee the accuracy of any information presented after the date of publication.

This white paper is for informational purposes only. MICROSOFT MAKES NO WARRANTIES, EXPRESS, IMPLIED, OR STATUTORY, AS TO THE INFORMATION IN THIS DOCUMENT.

Complying with all applicable copyright laws is the responsibility of the user. Without limiting the rights under copyright, no part of this document may be reproduced, stored in, or introduced into a retrieval system, or transmitted in any form or by any means (electronic, mechanical, photocopying, recording, or otherwise), or for any purpose, without the express written permission of Microsoft Corporation. Microsoft may have patents, patent applications, trademarks, copyrights, or other intellectual property rights covering subject matter in this document. Except as expressly provided in any written license agreement from Microsoft, the furnishing of this document does not give you any license to these patents, trademarks, copyrights, or other intellectual property.

© 2014 Microsoft. All rights reserved. Microsoft, Microsoft Dynamics and the Microsoft Dynamics logo are trademarks of the Microsoft group of companies.